



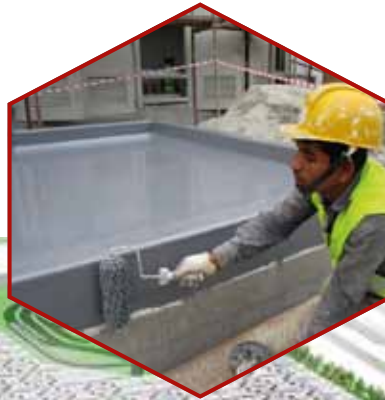
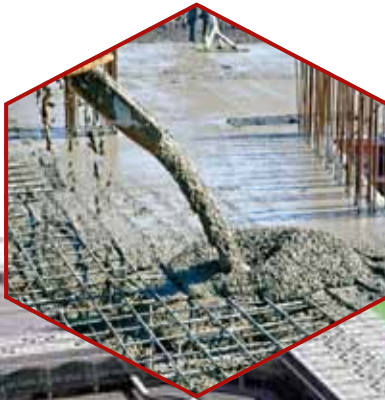
Your trust is our Motivation

Authorized Distributor & Applicator



STP Limited

Our Construction Chemicals Product Guide



ALTRA CONSTRUCTION TECHNOLOGY LIMITED

Your Trusted Partner

ALTRA PROFILE

ALTRA Construction Technology Limited is mainly a supplier & applicator company of construction materials and construction chemicals. Since the company was founded in 2017 towards the aspiration of working jointly with **M/S STP Limited** which is a leading manufacturer of high-quality products for Waterproofing, Road Surfacing, Epoxy Flooring, Admixture & Grouts etc. ALTRA Construction Technology Limited is the only authorized distributor of M/S STP Limited in Bangladesh.

We have a seasoned group of construction experts having very good technical knowledge of application of construction chemicals to facilitate all types of construction and rehabilitation of buildings. We provide services in the field of Construction Chemicals, such as RCC repair/restoration and rehabilitation of old and new construction/under design structure/fire damaged structure like building, bridges etc. Some Non-destructive testing services like Rebar scan, Core cutting, Moisture testing, Corrosion analysis etc. also readily available with us.

ALTRA also has successfully completed some works on Pipe Wrap coating at Bhola-Burhanuddin Power Plant and at Rampal Power Plant, Khulna. We have achieved special combined 1st class contracting license from different big organizations of Bangladesh

We provide time-tested solutions that include Services such as:

- Application Support
- Distribution Support
- After-Sales Service
- Diagnosis and Specification Support

We remain focused on the industrial and construction segments with a wide range of quality products:

- Waterproofing & Insulation
- Admixture & Surface Treatments
- Grouts & Anchors
- Retrofitting / Repair / Rehabilitation
- Joint Sealants & Adhesives
- Road Surfacing
- Pipeline Coatings
- Protective / Anti-Corrosion Coatings
- Epoxy & other Flooring etc.

Warehouse Address:

Plot-11, Road-11, Chandrima Model Town, Mohammadpur, Dhaka-1207.
Cell: +880 1958 472014, +880 1958 472015

Our Overseas Associate:

STP Limited

707 Chiranjiv Tower, 43 Nehru Place
New Delhi-110019, India.

One Stop Solution for all type of Constructions

Product	Description	Typical Uses	Dosage
---------	-------------	--------------	--------

► Waterproofing

ShaliUrethane BTD 25 Kg	Water Based UV Resistant Elastomeric Modified Polyurethane Conforms to ASTM C 836 & D 6083	Waterproofing of terrace, parking area, podium, roof garden and substrate of any geometrical shapes.	1.85 kg/ m ² for 1.0 mm DFT.
TarFlet LM 20 Kg	Cold applied, single component water based Bituminous Liquid Membrane	Corrugated asbestos roofs, Sunken, Rejuvenation of existing bituminous membrane – Hessian / HMHDPE based membrane, Residential terraces (flat / slope) in substitution of hessian / HMHDPE based membrane.	1.6 kg / m ² for 1.0 mm DFT.
ShaliUrethane LHM 22 Kg	Moisture Cured High Tensile Elastomeric Modified Polyurethane Conforms to ASTM C 836 & C 898	Waterproofing of terrace, basement retaining walls, sunken slab, podium, roof garden and substrate of any geometrical shapes	1.2 kg / m ² for 1.0 mm DFT.
ShaliUrethane LM 20 Kg	UV Resistance Single Component Aliphatic Polyurethane Conforms to ASTM C 836 & C 898	All non-trafficable and exposed terrace of any shape, water bodies, swimming pool & any other exposed structure.	1.4 kg/ m ² for 1.0 mm DFT.
ShaliUrethane® LHM 2K 15 Kg	Two Component Liquid Applied Polyurethane Water Proofing Membrane Conforms to ASTM C 836 & C 898	Roofs and terraces, podium, retaining walls, bath room under tiles, swimming pool and tunnels.	1.3 kg/ m ² for 1.0 mm DFT.
SuperThermoLay 3mm & 4mm	Spun Bonded Non-woven Polyester Reinforced APP Modified Waterproofing Membrane	Waterproofing applications including roofs, reservoirs, basements, basement roof, sunken slabs, terrace garden, car parking, tunnels and bridge decks.	1m x 10m
AquaShield 2mm, 3mm	Fibre Glass reinforced APP modified waterproofing membrane	Waterproofing applications including roofs, reservoirs, basements, basement roof, sunken slabs, terrace garden, car parking, tunnels and bridge decks.	2MM - 1MX15M, 3MM - 1MX 10M
ShaliCem EWP 50 Kg (Powder: 34kg) (Liquid: 16Kg)	Two Component Cementitious Elastomeric Waterproof Coating	Waterproofing of concrete and masonry surface, terrace, basement, machinery pits, reservoirs, swimming pool, sunken, wet areas etc.	1.6 kg/ m ² for 1.0 mm DFT. 2.5 kg/m ² 1.5mm DFT.



Spun Bonded Non woven Polyester Reinforced APP Modified WP Membrane

Product	Description	Typical Uses	Dosage
ShaliCrete 1 Kg, 5 Kg, 20 Kg, 50 Kg & 200 Kg	Acrylic Polymer Coating Conforms to ASTM E 96	Bonding & waterproofing coating for sunken slab, swimming pools, water tank, sewers, channels & other repairing work and rain beating exterior walls.	2.5 kg/m ² for 1mm thickness in two coats DFT.
ShaliCryl 215 5 Ltr & 20 Ltr	UV Resistant Elastomeric Exterior Acrylic Waterproof Coating Conforms to ASTM D 6083	Waterproofing of exterior walls, facade and other exterior vertical application. Available with a choice of wide range of colour shades.	3.25 m ² /l in two coats for 200 microns DFT.
SuperFlash Strip 1.5mm	UV Resistant Self-Adhesive Flashing Bituminous Tape	Metal, plastic, asbestos cement, gutters, metal pipes, metal plate, roofs Frames and skylights, parapets, glass and plastic structure	50 mm (2") x 10 m and 100 mm (4") x 10m
TarPlastic 1/2 Kg, 1Kg, 20 Kg	Cold applied bituminous caulking compound with mineral fillers in a volatile solvent to retain its plasticity	Expansion, contraction and vibration is expected, like around J Hooks used for fixing Asbestos / GI sheets. It can also be used for caulking various types of roofs and masonry walls, including. Fully plugging gaps, filling minor cracks / gaps in terraced roofs or other locations.	Refer to Data Sheet



**Waterproofing
Bituminous Liquid Membrane
with Selection Sand using
ShaliUrethane BTB.**

▶ Repairing Compound

Shalimar Dam-It 1Kg (12 Pack-1 Box)	Non-Shrink Fast Setting Hydraulic Cementitious Compound	Crack filler & instant stopper of leakages in concrete & masonry.	Mix 180 ml of water per 1 kg Pack
ShaliFix MC 25 Kg	High Performance Cementitious Repair Micro Concrete	Parking decks, floor toppings, joint repairs, equipment bases, pedestals and pavements.	3.875 l of water to have a yield 0.0125 m ³ .
ShaliFix EM 20 Kg	Three Component Epoxy Mortar Conforms ASTM C 811-90 Type II & IV, Grade 1, Class B & C	Warehouses, dairies, service stations, chemical plants, metal treating plants, machinery service areas, food processing, rendering plants, concrete runways & joint arises in highways.	Depends on thickness and surface finish.
PlastiSeal 1Kg (12 Pack-1 Box)	Crack Sealer	Crack repair of internal/external wall & roofs for crack size up to 3 mm.	Consumption depends on crack size.
PlastiSeal P 25 Kg	Single Component Cementitious Crack Filler	Crack Filling. Level undulation on un-plastered or plastered ceilings and wall prior to painting. Provide smooth finish to brick, stone and wood works. Excellent sculpting material.	PlastiSeal P : Water :: 2.5:1. Can fill 3 to 5 mm wider static cracks.
ShaliFix FRM 25 kg	Polymer Modified Fiber Reinforced Mortar	Mass infill to large areas, repair of irregular profiles and fire damaged concrete.	Depends on thickness and surface conditions.

Product	Description	Typical Uses	Dosage
---------	-------------	--------------	--------

▶ Grout

ShaliGrout 50 25 Kg	Single Component Free Flow Non Shrink High Strength/ Fluidity Grout	Grouting of machinery and equipment. Bridge seats, structural columns, bending plates, crane rails & anchorages.	3.75 / of water required per bag of grout. Yield around 0.0125 m ³ of fluid grout.
ShaliGrout 73 25 Kg	Single Component Free Flow Non-Shrink High Strength/ Fluidity Grout	Heavy duty grouting of machinery & equipment. Ball mills, petro chemical, fertilizer units, bridge bearing plates, textile machineries, anchor bolts / bars. Dg sets base foundation & fence posts.	4.125 / of water to have an yields of 0.0125 m ³ .
ShaliGrout 90 25 Kg	Single Component Free Flow Non-Shrink High Strength / Fluidity Grout	Used for filling machine pocket bolt when very high quick strength is required.	4.125 / of water to have an yields of 0.0125 m ³
ShaliGrout EI 2 Kg (A : 1.70 Kg, B: 0.30 Kg)	Two Component Epoxy Injection Grout for Structural Strengthening	Grout for permanent bonding of structural damage, parking, bridge, marine, retaining wall structure & earthquake damage repair. Vertical and overhead applications.	Consumption Depends upon area, shape and usage.
ShaliGrouts® PU 20 Kg	Polyurethane Based Water Reactive Injection Grout	Stopping leaks in structures. Stopping water oozing from ground, dams and banks. Leaks from large and small caliber sewer pipes, concrete crack and expansion joints. Leaks into building structures & tunnel.	Consumption Depends upon area, shape and usage.
ShaliGrout IP 1 Kg (12 x 1 kg)&20 kg	Single Component Injection/Pressure Grout for Cement / Mortar / Concrete Conforms to BS 8110 Part 1, 1985, Section 8.9.4.6.	Injection grout for voids, cable duct grouting, pre-stress concrete hume pipe joints, water tank & repair of any other masonry & concrete structures.	1 kg powder to be added per 50 kg cement bag.
ShaliGrout Anchor 1Kg (A : 250 gm, B: 70 gm) x 16	Two Component Polyester Resin Based Anchor Grout	For anchoring bolts or bars into concrete, rock, masonry or brick work. Permanent installation of reinforcement starter bars. Foundation bolts, base plates, barriers & safety fences. Railway tracks. Ground anchors for towers & canes.	Specific Gravity: 2.20-2.40 Depends upon Depth, Dia and usage.

▶ Admixture

ShaliPlast PCE-200/300/400 225 Kg Drum	High Performance Polycarboxylated Ether based Superplasticiser	Used for self compacting high grade concrete for ready mix concrete, precast concrete etc.	0.2 - 1.0% by weight of cement. Actual dosage to be finalised after site trials.
ShaliPlast SP 20 Kg & 200 Kg Drum	High Range Water Reducing Cum Retarding Admixture	Naphthalene based admixture for mass concrete, ready mix concrete, precast slabs, flowing concrete, heavily reinforced concrete & pump-able concrete.	0.5 to 2.0% by weight of cement. Actual dosage to be finalised after site trials.
ShaliPlast SP PQC 250 Kg Drum	Chloride Free Superplasticiser for Pavement Quality Concrete	Excellent for use in high performance concrete like roads, runways, etc. Excellent pumpable property and suitable for highly reinforced concrete.	0.6 to 1.5% by weight of cement. Actual dosage to be finalised after site trials.

Product	Description	Typical Uses	Dosage
ShaliPlast HP 20Kg & 200 Kg Drum	High Range Water Reducing Plasticizer	Modified naphthalene based admixture for higher grade of concrete, railway sleeper, shell form, precast element, girder, foundation & slip form structures.	0.4% to 2% by weight of cement. Actual dosage to be finalised after site trials.
ShaliPlast LW + 1L , 5L , 20L & 200L Drum	Integral Liquid Waterproofing for Cement Plaster & to IS: 2645-2003 & 9103-2000 Concrete (PCC) Conforms	Integral waterproofing & damp proofing additive for plaster & PCC used in basement, screed, water tank, floors, mass concreting in foundation & external Plastering.	200 ml per 50 kg bag of cement
ShaliPlast LW++ 5L , 20L & 200L Drum	Integral Waterproofing cum-Corrosion Inhibitor For Reinforced Cement Concrete (RCC) Conforms to IS: 2675 & 9103 ASTM C 1582M	Additive for RCC as migratory corrosion inhibition of reinforcement steel bars, also imparts waterproofing to concrete. Applicable for all concrete structures.	200 ml per 50 kg bag of cement
ShaliPlast P 20 Kg & 200 Kg	Water Reducing Admixture	Ligno sulphonate based water reducing admixture for column, beam, slab & all concrete structures.	0.2to 1.5% by weight of cement. Actual dosage to be finalised after site trials.
ShaliPlast FS 20 Kg & 200 Kg Drum	Accelerator for Concrete	Concrete blocks, pipes, stepping stones and Lintels.	0.5 - 2 kg / bag of cement. Actual dosage to be finalised after site trials.
ShaliFoam 20 Kg & 200 Kg Drum	Admixture for Foam Concrete	Foam generating admixtures for concrete. It is a water based chloride free liquid.	600 ml -1.2 l per 50 kg bag of cement. Actual dosage to be finalised after site trials.

► Surface Treatment

ShaliCure SS 20 l & 200 l	Water Based Curing & Sealing Compound for Concrete Surface Conforms to ASTM C 309	Used for curing of all types of concrete structure.	8 m ² / l
ShaliSlip WB 20 l & 200 l	Water Based Form Release Agent	Water based form release for steel, & wood or concrete moulds. Diluted with water in 1:5 ratio.	25-36 m ² / lthe mix

► Floor Hardner

ShaliFloor NM 25 Kg	Non Metallic Floor Hardener	Car park areas of commercial and public buildings, food processing & electronics industries, breweries, restaurants, dairies, automobile showrooms and service centers, warehouses, loading docks and high traffic aisleways.	Light traffic: 3.5 Kg - 4.0 Kg/ m ² Medium traffic: 4.5 - 5.0 Kg/ m ² Heavy traffic: 6.5 - 7.0 Kg/ m ²
ShaliFloor M DH 25 Kg	Non-Oxidizing, Heavy Duty Metallic Floor Hardener	Industrial floors, warehouses, processing plants, vehicle maintenance shops, loading docks, main, high traffic aisle ways/ gangways, machine shops, breweries, bottling plants, joint shoulders reinforcement.	Normal traffic: 3 5 Kg/ m ² Heavy traffic: 6 - 12 Kg/ m ²

Product	Description	Typical Uses	Dosage
---------	-------------	--------------	--------

► Flooring

ShaliPrime 2E 24 Kg Pack (A : 4 x 4 Kg, B : 2 Kg x 4)	Two Component Epoxy Primer for Concrete Surfaces	Primer for all types of epoxy self level flooring & coating.	6-7m ² / Ltr
ShaliFloor 3ES 20 Kg Pack (A : 1.65 Kg, B : 0.59 Kg C : 17.76 Kg)	Three Component Chemical & Abrasion Resistant Epoxy Screed	For use in high impact, abrasion, fork lift movement & areas exposed to chemical & oil spillage such as processing plants, warehouse, fertilizer plant, paper mills/textile mills, automobile plant & power houses.	1.8 m ² / 20 kg for 5 mm thickness. A coat of ShaliPrime 2E is mandatory.
ShaliFloor SL UL 3ES 26 Kg Pack (A : 4.32 Kg B : 3.09 Kg C : 18.59 Kg)	Three Component Epoxy Self-Leveling Underlay Epoxy Screed	Use for dust proof, dean & hygienic surfaces like pharmaceutical unit, food factory, operation theater & manufacturing units.	10 m ² / per 37 kg bag for 2 mm thickness. A coat of ShaliPrime 2E is mandatory.
ShaliFloor SL TC 4E 26 Kg Pack (A : 5.25 Kg, B : 3.82 Kg C : 15.89Kg, D: 1.04 Kg)	Four Component Pigmented Self Leveling Epoxy Floor Top Coat	For dust proof, clean & hygienic surfaces like pharmaceutical, dairy, food processing plant, clean room, automobile industry & work shop.	8 m ² / per 26 kg bag for 2 mm thickness. A coat of ShaliPrime 2E is mandatory.
ShaliFloor PU 26 Kg Pack (A: 2.90 Kg, B : 4.24 Kg, C : 18.21 Kg, D : 0.65 Kg)	Four Component Medium Duty Polyurethane Self Leveling Flooring System	Highly suitable for Food, dairy and beverages industries having thickness of 4 mm to 6 mm. Also suitable for higher floor coating thicknesses in textile, pharmaceuticals and chemical plants where steam washing is involved.	2 Kg/ m ² for 1 mm thickness. However depends on floor base condition. A basic scratch coat is must initially and subsequent coats are to be laid over it.



PU Flooring using ShaliFloor PU

► Adhesives

ShaliBond Concrete 2 Kg	Two Component Epoxy Bonding Adhesive / Primer for Concrete	Moisture insensitive adhesive for bonding old concrete with new concrete / flooring, repairing of structural members. Priming, sealing, bonding toppings, general adhesive.	250-300 grms/ m ² 150-200-micron DFT.
ShaliSBR Latex 5 l, 20 l & 200 l	Bonding Agent for Adhesion & Repairs of Concrete/Masonry Structures Conforms to ASTM C 1059-86	For repairing old damaged concrete & masonry work including soffit of slabs. To bond new & old concrete / masonry works. Passivating coat on reinforcement.	Refer to Data Sheet
ShaliBond S 2 Kg	Two Component Segmental Bridge Epoxy Adhesive Conforms to ASTM D 648.	Segmental bridge adhesive.	2 l / m ² for 2 mm thickness

Product	Description	Typical Uses	Dosage
CPRX Compound 20 L & 200 L Drums	Rubberised based Bituminous Adhesive of brush-able consistency	Fixing of expanded/ extruded Polystyrene (thermocole), insulex soft boards and fibre glass insulation slabs for all type of structures where bituminous adhesive is acceptable.	Refer to Data Sheet
ShaliBond APP 20 Kg & 200 Kg Drums	Synthetic Adhesive for APP Membrane With Release Film	Bonding adhesive to affix bituminous membrane with release film. On corrugated asbestos / metallic sheet, Areas where torching / heating is prohibited / uneconomical.	Refer to Data Sheet
ShaliBond BS/ CS 1 Kg, 4 Kg and 18 Kg	Cold Applied Bituminous Adhesive For Fixing Roofing Felts	Recommended for sticking roofing felts on metal, timber, tiles, asbestos, concrete and masonry surfaces, including roofs of trains, buses, tramcars, railway carriages, etc.	Refer to Data Sheet

► Sealant

ShaliSeal PS PG/GG 4 Kg	Two Component Polyisulphide Sealant - Pouring /Gun Grade Conforms to IS:12118: Part 1, 1987, 4254, BS 5212 & ASTM C 920	Expansion joints in industrial, commercial or residential buildings. Joints in concrete roads, bridges, subways, flyovers & airport runway, water retaining structures like water tank, swimming pool including decks, aquaducts, dams, canals & reservoirs. Nuclear Power station reactor domes. Joints between concrete pipe lines & roof light.	Depends on Expansion joints size
ShaliSeal PU 2K PG/GG 4 Kg	Two Component Pouring Grade Polyurethane Sealant-Pouring/Gun Grade Conforms to BS: 5212-1990	Expansion joints in industrial, commercial / residential buildings, docks and harbors. Joints in concrete roads, bridges, subways, flyovers & airport runway, water retaining structures like water tank, swimming pool, aquaducts, dams, canals & reservoirs. Nuclear power station reactor domes. Joints between concrete pipe lines & roof light Window sealing for air conditioned coaches.	Depends on Expansion joints size
ShaliSeal PU GG 600 ml	SausageSingle Component Polyurethane Joint Sealant Conforms to BS:5212, ASTM C 920 ISO - 11600	Expansion and construction joint sealants for runway, roads, building bridge decks, docks, harbors. Civil structures including building, residential, commercial, industrial & prefabricated constructional panels.	Depends on Expansion joints size
ShaliPrime S 1l Pack (500ml each)	Two Component Primer for Polysulfide / Polyurethane Sealant	Primer for vertical surface to facilitate proper bonding of sealant with Concrete, Steel, Aluminium and Glass surface.	On Concrete Surface - 7 m ² /l On Metal Surface - 10 m ² /l

► Protective Anti Corrosive Coating

ShaliPoxy® 2HB SF 4 Kg	Two Component Solvent Free High Build Epoxy Coating	Resistant to fungal/bacterial growth & ideally suitable for areas requiring hygienic, dust free wear-resistant surface. Aerospace industry/airport hangers. Dairies & breweries. Chemical/ pharmaceuticals/food processing/ bottling plant. Electric/electronics industries. Hospital operation theatre, nuclear plants & laboratories.	2.5 m ² / kg /coats.
----------------------------------	---	---	---------------------------------

Product	Description	Typical Uses	Dosage
ShaliKote C 18 l	Two Component Anti-Corrosive Ceramic Epoxy Coating	For structural steel, tank lining, coke oven plant, mines and marine installation & waste water treatment plants.	3 - 4 m ² / l for 200 -250 microns DFT. Two coats are recommended.
ShaliPrime AC 20 l	Silane Siloxane Based Penetrative Primer for Concrete and Masonry Surfaces	Primer for concrete surface. It makes the surface compatible for subsequent treatment.	4 - 5 m ² / l
ShaliKote AC 20 l	High Performance Anti Carbonation Protective/ Decorative Coating	For old & new concrete structure, bridge, flyover, dam, chimney, cooling tower, unglazed brick tile, terrazzo floor and walls.	5 m ² / l / coat. Two coats are recommended with a coat of ShaliPrime AC.
ShaliKote AC WB 10 l & 20 l	Water Based Protective-cum-Anti Carbonation Coating	Flyover, Bridge abutments, External concrete surface of storage tank & vessels and masonry surface. Multi-storied building and villas.	6-7 m ² / l / coat.
ShaliPrime Zn Ph 15 l Pack (A: 13.29 l ,B: 1.71 l)	Two Component Anti-Corrosive Zinc Phosphate Primer	Use on blast cleaned steel where epoxy coating will be done. It may be used for patch primer for treatment of manually prepared steel.	5-8 m ² / l for 60 - 100 micron DFT
ShaliPrime Zn R 15 l Pack (A: 12 l ,B: 3 l)	Two Component Anti Corrosive Zinc Rich Primer Conforms to IS : 14589 : 1999	Used as anti-corrosive primer on metal surface, reinforcement bars etc.	5-6 m ² / l for 35 micron DFT.
SuperSilver Shield 20 L Drum	Bituminous Anti-corrosive Multi-purpose Aluminium Coating	Protective coating on iron, steel, masonry and other surfaces. It is used to reflect UV rays and protect bituminous waterproofing felts and fabrics, while giving a visually pleasing finish	Refer to Data Sheet
ShaliPoxy CTE 103 20 L Drum	Anti-corrosive / Protective Flexible Coal Tar Epoxy Coating	MS / concrete pipes, metallic structures, Crude oil storage tanks /underground structures / other metal & steel structures & pipes, Sheet & pipe piling, Dams, Barrage gates, Penstocks, Foundation walls and sumps, Concrete and Steel surfaces in sewage treatment plant, Paper Mills / Chemical Plants.	Refer to Data Sheet
TankMastic® 700 1 L, 4 L, 20 L & 200 L Drums	Bituminous Anti-Corrosive Multi-Purpose Coating	Provides corrosion protection coating to all types of iron, steel, masonry / concrete surfaces, It being non-toxic / odourless, is suitable for coating insides of masonry / steel water tanks.	1 L per m ² On metal, concrete surface

► Road Surface

SEJ Board 12, 18 & 25 mm	Bitumen Saturated Expansion Joint Filler Board	Filling structural expansion & structural separation joints in block & in situ concrete construction including screed floors, motorways, roads, runways, pedestrian areas, bridges, curbs, basements, retaining walls, site slabs, subways & other structures etc.	1.22 m x 1.22 m Depends on expansion joint size.
ShaliTex® Sealing Compound 20 & 200 Kg	Bitumen Based Sealing Compound	Bridge / road joints, runway joints, joints in garages, filling stations and other places of construction joints like in warehouse floors and secondary containment of walls and floors of artificial water ponds.	Refer to datasheet

Product	Description	Typical Uses	Dosage
ShaliSeal® RS TC 200 Kg Barrel	Road Surfacing Top Coat Waterproofing Slurry	Internal roads of residential complex / housing society, refineries, power plants, manufacturing industries etc. Expressway, Highway, Parking Lots, driveways. Gasoline stations, service stations and truck terminals.	Refer to datasheet
ShaliPatch EC 10 Kg Pack (A: 3.6 Kg, 8: 0.90 Kg C : 5.5 Kg)	Three component Self Leveling Modified Elastomeric Concrete	Repair of cracks ranging between 5-50 mm on roads, bridges, highways, runways, apron, taxiways, parking decks, commercial structures, substrate concrete, airfield lighting & industrial floor. Excellent surface defect repair. Compatible with both concrete & bituminous pavement.	Depends on crack size and depth. Mix Density: 1.6 - 1.8
ShaliMastic® RS TC 20 Kg and 200 Kg combo pack	Three Component Refined Coal Tar Concentrate Pavement Sealer	Expressway, Highway, Parking Lots, driveways, restaurants and hotels.	Refer to datasheet
ShaliMark® WB HB / LB	Cold Applied Water Based Acrylic Road Marking Paint	It can be applied on bitumen and concrete pavement, zebra crossing, path dividers, speed breakers and other similar markings	Refer to datasheet
ShaliMark 25 Kg	Thermomastic Road Marking Paint	Hot applied road marking paint for highways, zebra crossing, car parking and inside of plant and big housing societies/colonies.	5 kg /m ² for 2.5 mm thickness.



Bridge Deck Waterproofing using SuperThermoLay APP Membrane.

► Pipeline Coating

ShaliPrime® PW CT 20 L & 200 L Drum	Resin based synthetic primer containing unmodified chlorinated rubber and special grade of coal tar tape.	Applied as a primer over steel pipelines for providing bond between PipeWrap CT and primed steel pipes.	1 L / m ²
PipeWrap® CT 2 mm, 3 mm & 4 mm	Hot applied anti-corrosive coal tar tape coal system for water / gas / oil pipelines	Coating material for drinking water pipelines, fire fighting pipelines, raw water pipelines in thermal plants, oil and gas pipelines.	Refer to Data Sheet
ShaliPrime® PW BT 20 Kg & 200 Kg Drum	Synthetic Primer for Bituminous Tapes	Applied as a primer over steel pipelines for providing bond between PipeWrap BT and primed steel pipes.	Refer to Data Sheet
PipeWrap® BT 2 mm, 3 mm & 4 mm	Hot Applied Anti-Corrosive Bituminous Tape	Coating material for drinking water pipelines, fire fighting pipelines, raw water pipelines in thermal plants etc.	Refer to Data Sheet

Product	Description	Typical Uses	Dosage
ShaliPrime CT 20 L	Two Component Coal Tar Epoxy Primer for Concrete / Metal Surfaces	Priming of concrete / metal surfaces, interior side of basement walls prior to plastering to prevent dampness.	1 L / m ²
ShaliPoxy 400 200 L Drum	Two Component Food Grade Epoxy Coating	Excellent coating for internal / external lining of pipelines where abrasion / chemical resistance is of major concern. Sea water intake tunnels	1 L / m ² , 400 micron DFT.
ShaliUrethane®TC 20 MS Drum	Moisture Cure Aromatic PU Top Coat For Metallic Substrate / Pipe	Pipeline exterior, Structural steel like bridges ballast tanks, storage tank, sluice gate, off shore platforms etc in ports. Power, Oil and Gas including waste water treatment, chemical / fertilizer plants.	1 L / m ² , 150 micron DFT.

Product and services rendered by ALTRA Construction Technology Limited



Fig- App Modified Waterproofing Mebrane using SuperThermolay



Fig- Cementitious Elastomeric Waterproof Coating



Fig- Thermal Insulation Board With CC Casting



Fig- UV Resistant Acrylic Liqueid Membrane



Fig- Waterproofing by PU Liqueid Membrane Without Removal Tiles



Fig- WP Prime Coat at Sheraton Hotel

Product and services rendered by ALTRA Construction Technology Limited



Fig- Bitumen Based Sealing Comound



Fig- Instant, Convenient & Durable System to Repair Pot-Holes (ShaliPatch)



Fig- ShaliSeal RS TC Road Emulsion (Top Coat Road Slurry for Enhancing Road Life by Preventing Water Ingress



Fig- Anti Carbonation Coating



Fig- Joint Sealant for Expansion Joint



Fig- Concrete Expansion Joints (Shalitek Joint Filler Board)



Fig- Single Coat Bituminous Anti-Corrosive Coating



Fig- Shutter Release Compound using Water Based Shutter Oil

Product and services rendered by ALTRA Construction Technology Limited



Fig- Bottom Slab Jacketing



Fig- Crack Sealing by low Viscous Epoxy using ShaliGrout EI



Fig-Aluminium Angle for Expansion Joint



Fig-Beam Retrofitting



Fig-Concrete Core Cutting



Fig-Epoxy Grouting using ShaliGrout EI



Fig-Grout Pumping at Beam Void Filled



Fig-Removal of Plaster & Loose Concrete

Product and services rendered by ALTRA Construction Technology Limited



Fig-Retrofitting Below grade beam



Fig- Anti-corrosive-coal-tar-based-coating



Fig- PipeWrap CT Wrapping at 220 MW Bhola



Fig- PipeWrapping 1st Layer at 1320 MW Rampal Power Plant



Fig-Holiday Testing PipeWrapping at 1320 MW Rampal Power Plant



Fig- PU Flooring using ShaliFloor PU



Fig- Floor Hardening Using Power Trowel Machine



Fig- Self Levelling Epoxy Floor

OUR EXCLUSIVE PRODUCT RANGE



Our Major Clients



ABC Limited



Abdul Monem Ltd.



ACI Limited



AKIJ GROUP



Asset Developments & Holdings Ltd



Beximco Pharmaceuticals Ltd.



British American Tobacco



bti technology & ideas Ltd.



Hatil Group



Karnaphuli

Karnaphuli Group



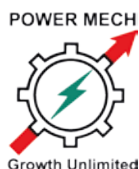
Meghna Group of Industries



Mir Akter Hossin Limited



OSJI JV



Power Mech Projects Limited



Rangs properties limited



Shimizu Corporation



Sinamm Engineering Limited

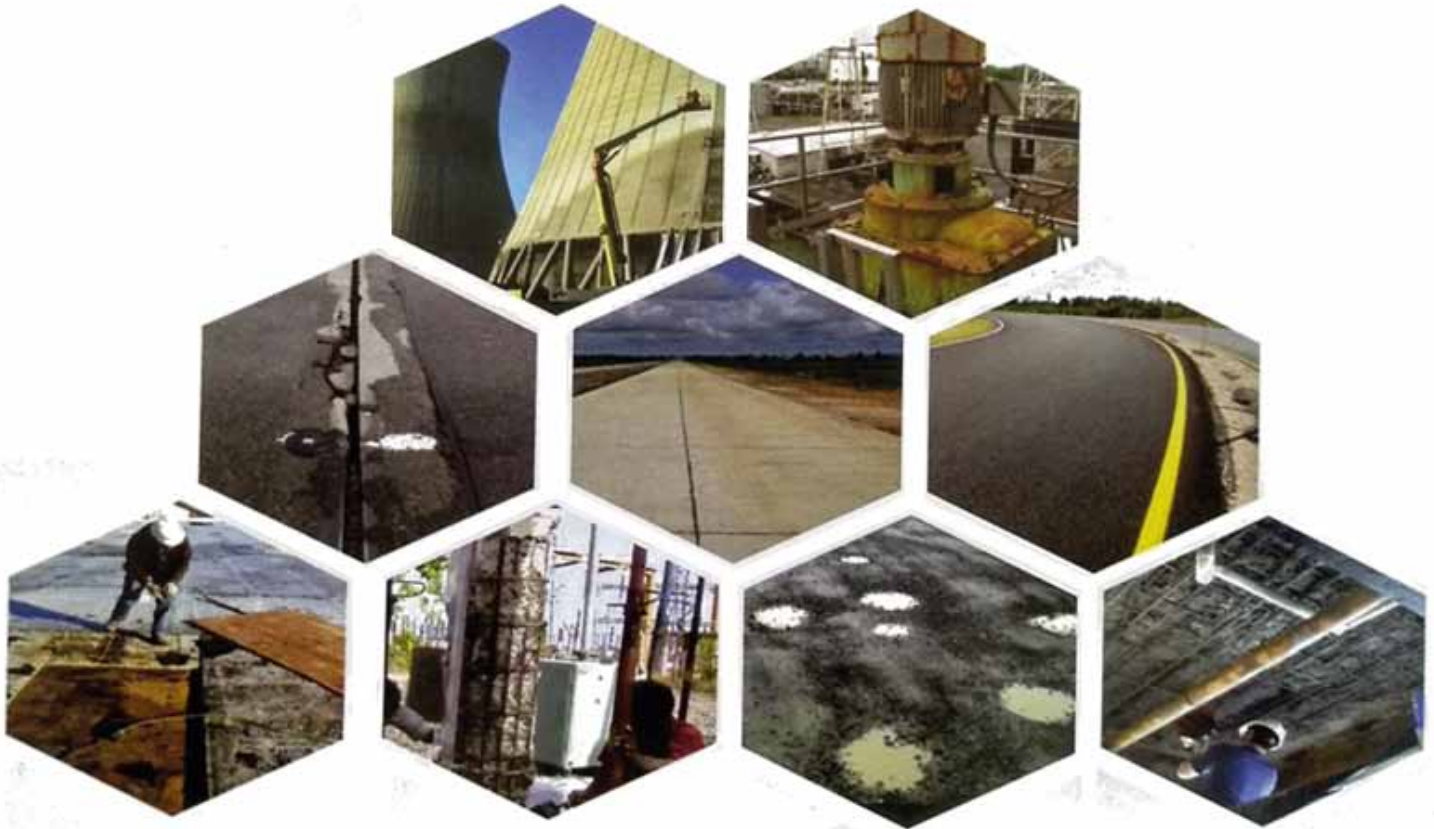


Your trust is our Motivation



Restofix

Complete Repair Solutions for Concrete, Roads & Steel



Your trust is our Motivation

ALTRA Construction Technology Limited

15/2, Level-8, Mamta Heights, Mirpur Main Road, Shyamoli
Dhaka-1207, Bangladesh

Tel: +88 02 5815 4145, Mob: +880 1708529146, +880172094776

Email: altrabd@outlook.com, info@altrabd.com

Product Range

- ✦ **Waterproofing & Insulation** ✦ **Road Surfacing** ✦ **Sealants & Adhesives**
- ✦ **Protective/ Anti-Corrosion Coatings** ✦ **Pipeline Coatings**
- ✦ **Grouts & Admixtures (GARA)** ✦ **RestoFix- Repair/ Rehabilitation**
- ✦ **Epoxy & Flooring etc.**

www.altrabd.com